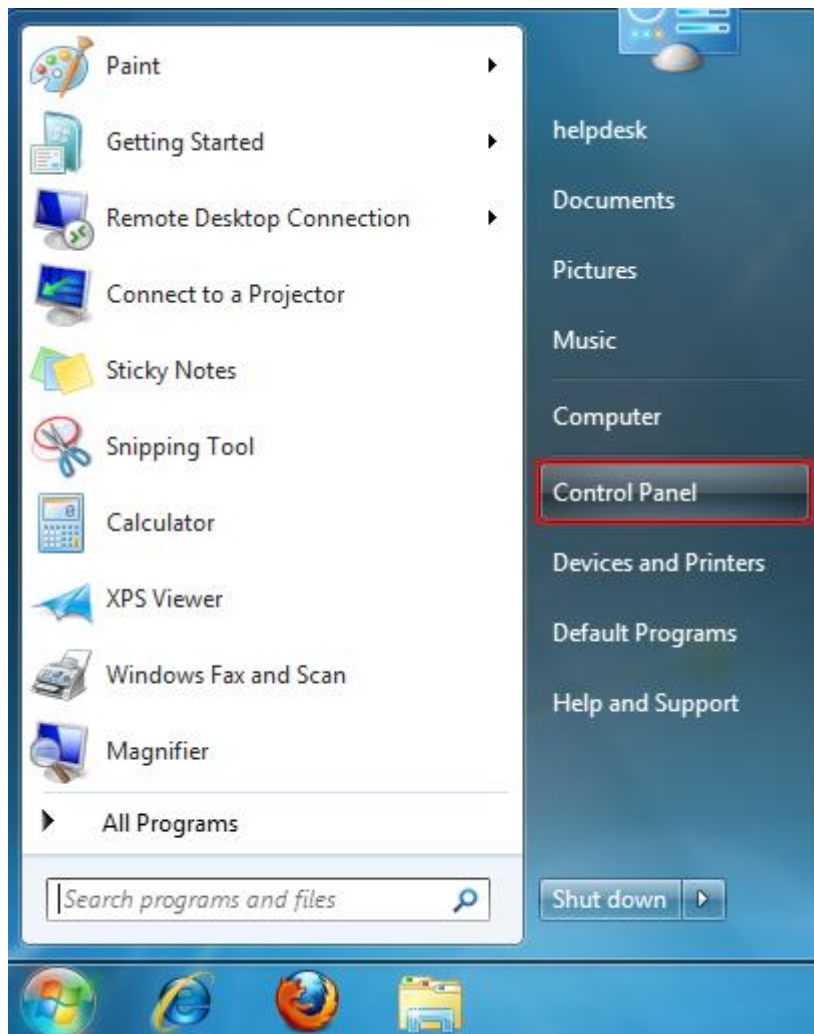


How To Obtain an automatic IP address: Windows 7

If you are having difficulties connecting to the wired Internet in your residence or office, it may be because your computer is attempting to obtain a static, rather than an automatic, IP address. In order to connect to the wired Internet, your computer must be configured to use DHCP.

1. Click on your **Start** menu and select **Control Panel**.

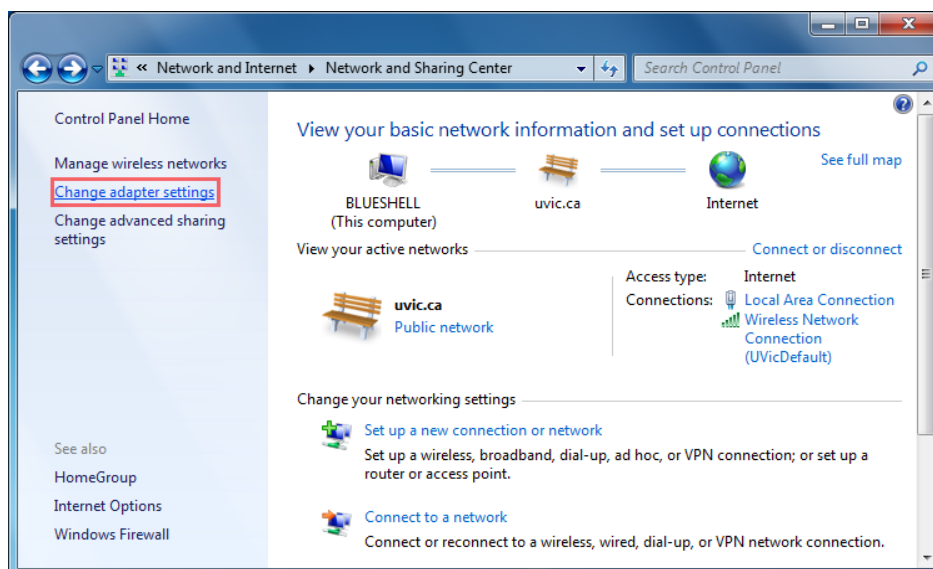


2. Click on **Network and Internet**.

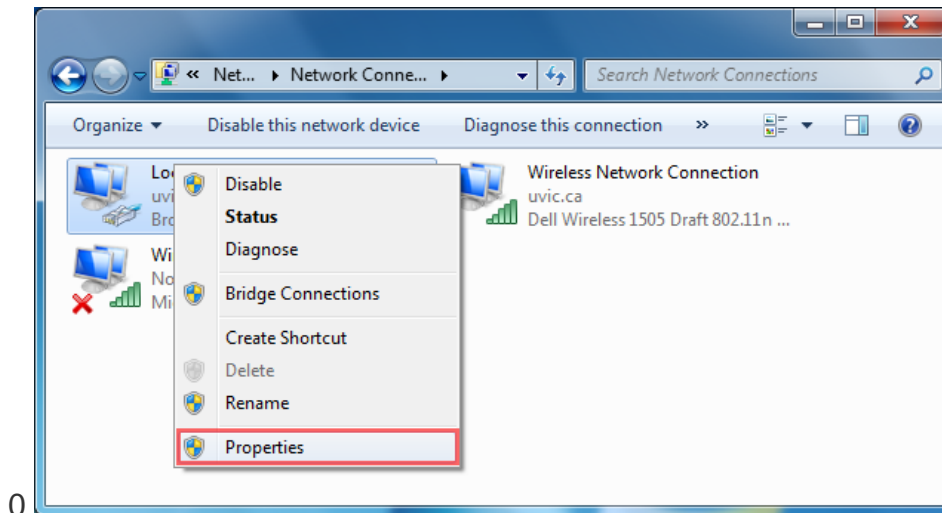


3. Click on **Network and Sharing Center**.

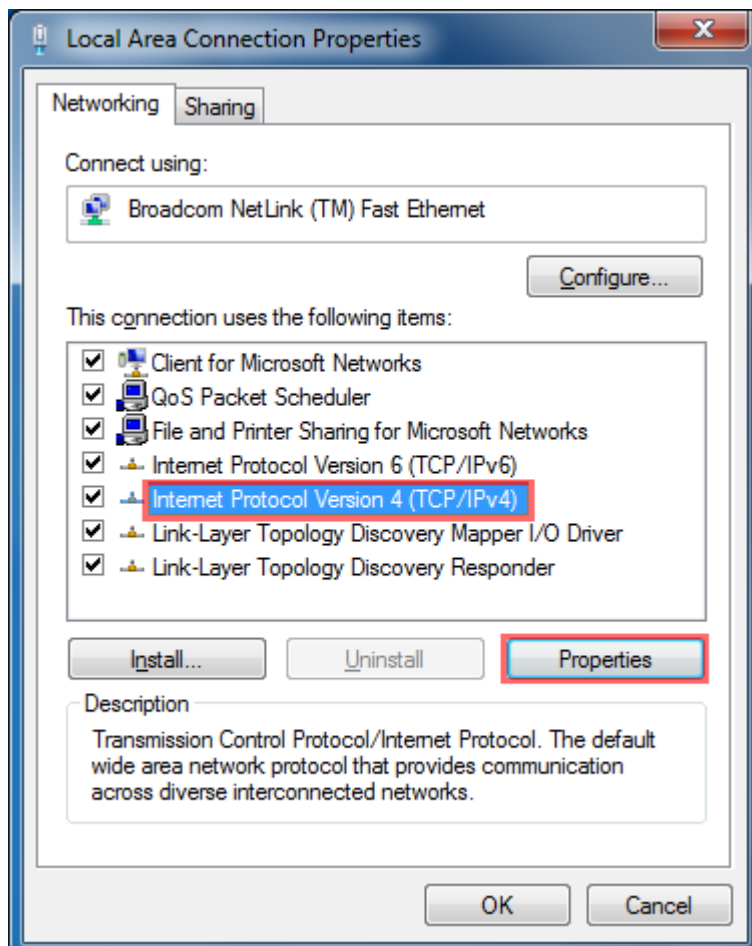
4. Click on **Change adapter settings**, located on the left-side menu.



5. Right click on the **Local Area Connection** icon and select **Properties**. You will need to have administrator access.

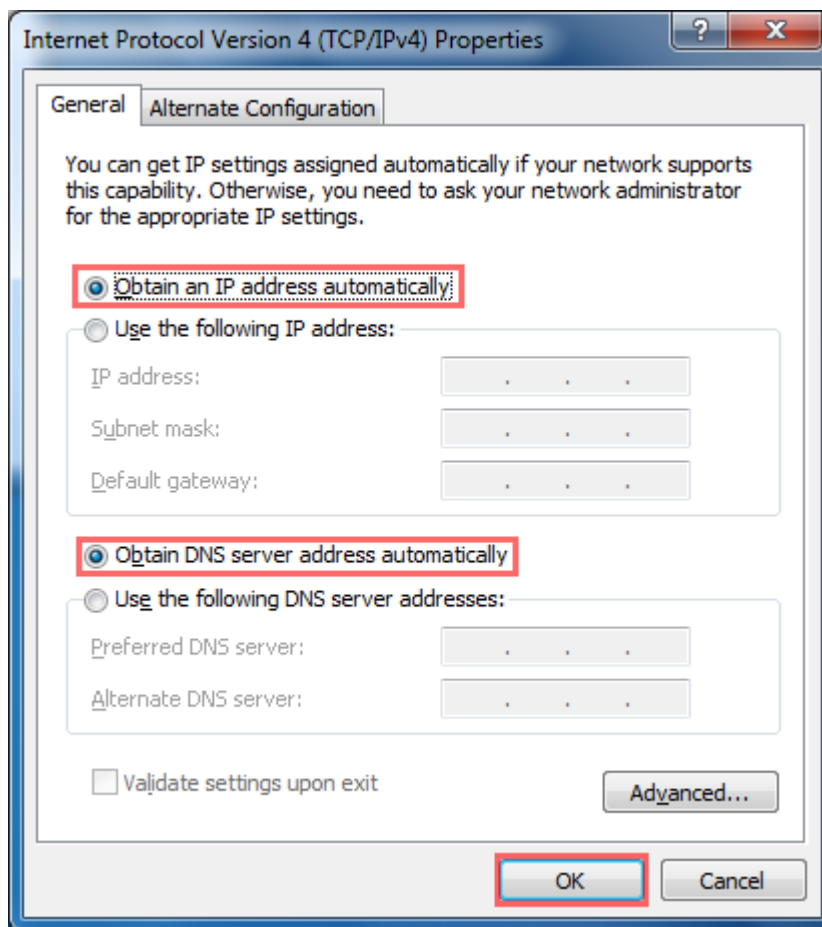


6. In the new window, select **Internet Protocol Version 4 (TCP/IPv4)** from the list of items and click **Properties**.



If any IP or DNS information is listed in the new window, you may want to write it down in case you need to restore your settings at a later time.

7. Ensure the radio buttons beside **Obtain an IP address automatically** and **Obtain DNS server address automatically** are selected. Click **OK**. Close the remaining windows.



Obtain an automatic IP address: Windows 8/8.1

1) Click **Desktop** tile on Start screen in order to go to Windows desktop environment that you are familiar with.



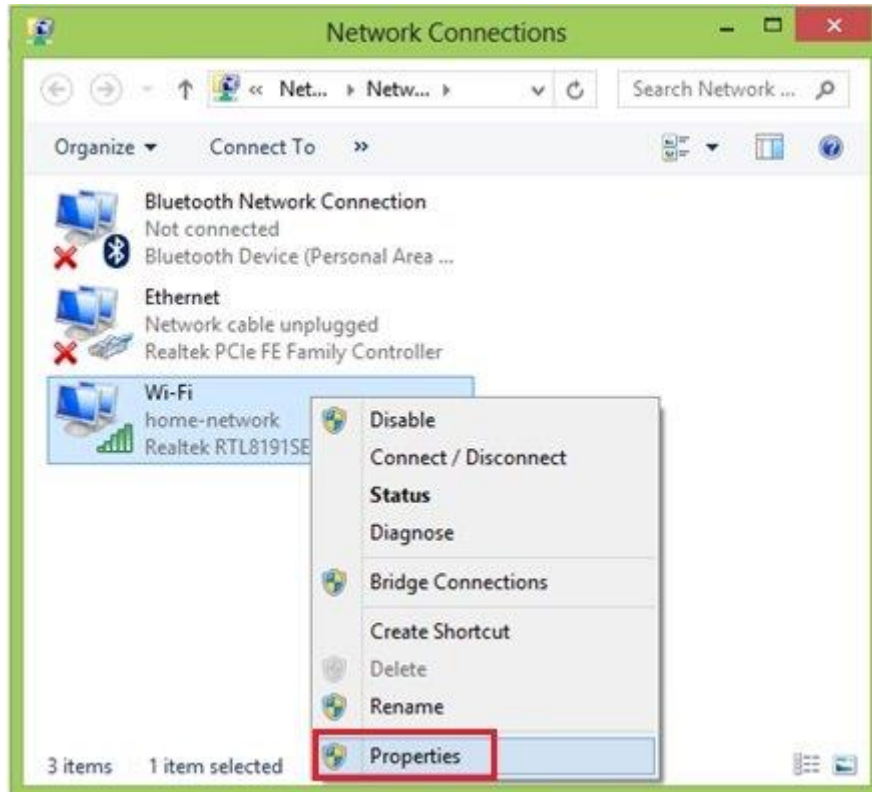
2) Right click the **network icon** on lower right corner of task bar area and click on **Open Network and Sharing Center**.



3) Once Network and Sharing Center appears, continue to click **Change adapter settings**.

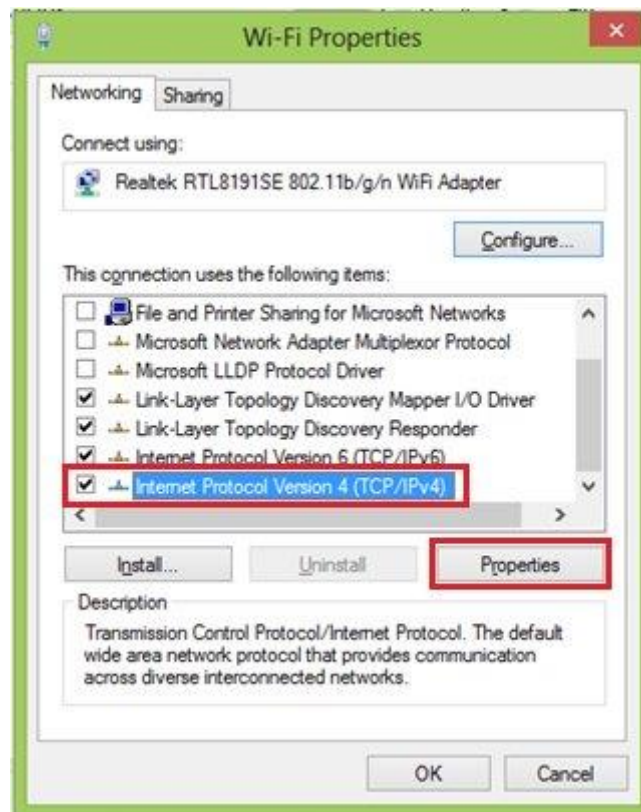


4) Ok, if there are wireless and wired adapters installed on your computer, you will be shown a list of network connections that includes your wireless (Wi-Fi) and wired (Ethernet) connections. Right click the connection you would like to change its network settings, and click on **Properties**. In this case, I right click my Wi-Fi connection and click on Properties.



5) In the Network Connection Properties window, tick on **Internet Protocol Version 4 (TCP/IPv4)** and click **Properties**.

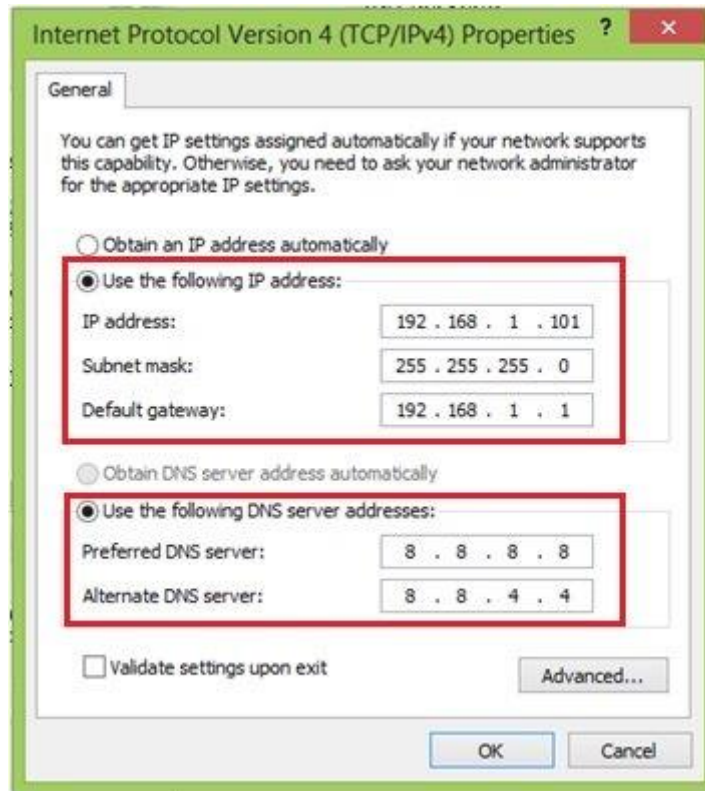
Note: If your computer is connected to IPv6 network, you can select Internet Protocol Version 6 (TCP/IPv6) to configure IPv6 address, but it's not covered here.



Manual IP Address Assignment

If you like to do manual network configuration, you can now key in the IP address, Subnet mask, Default gateway and DNS servers. Please bear in mind that IP address of your computer must be unique, because none of the 2 computers in the same network can share same IP address that will trigger IP address conflict problem.

Note: Default gateway is a router that can route the traffic to the other network or Internet, usually it's LAN IP address of your home router. DNS server is an application server that can translate URL to IP address, so that you could browse websites without problem. Check with your ISP on which DNS servers you should use. If not, you can try these free [OpenDNS](#) or [Google DNS servers](#).



Automatic IP Address Assignment

If you have DHCP server configured on your router or you have dedicated DHCP server, you can configure your computer to get IP address and other network information automatically by selecting **Obtain an IP address automatically** and **Obtain DNS server address automatically**.

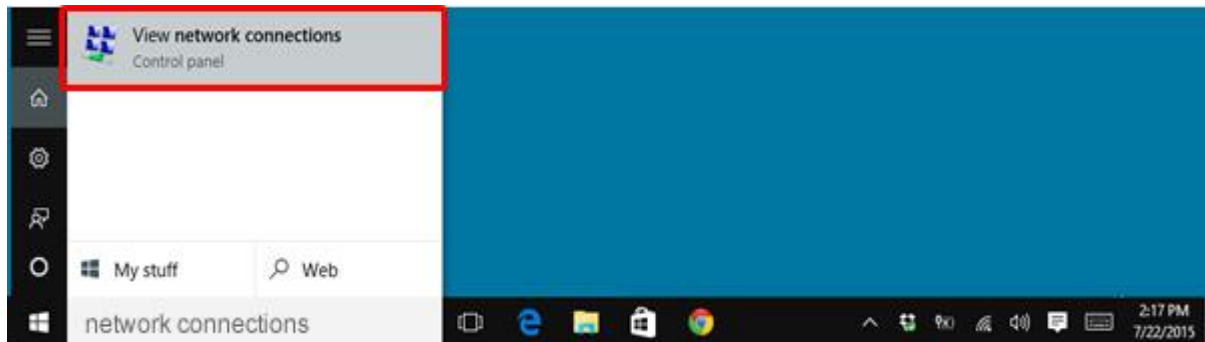


Obtain an automatic IP address: Windows 10.

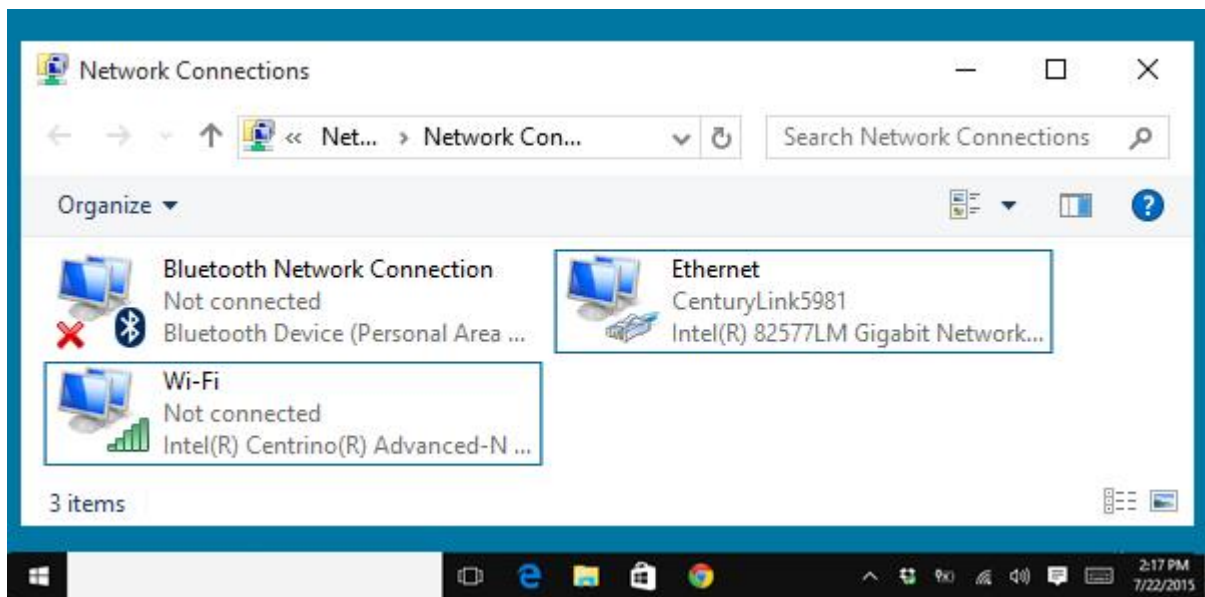
1. Type **network connections** in the search.



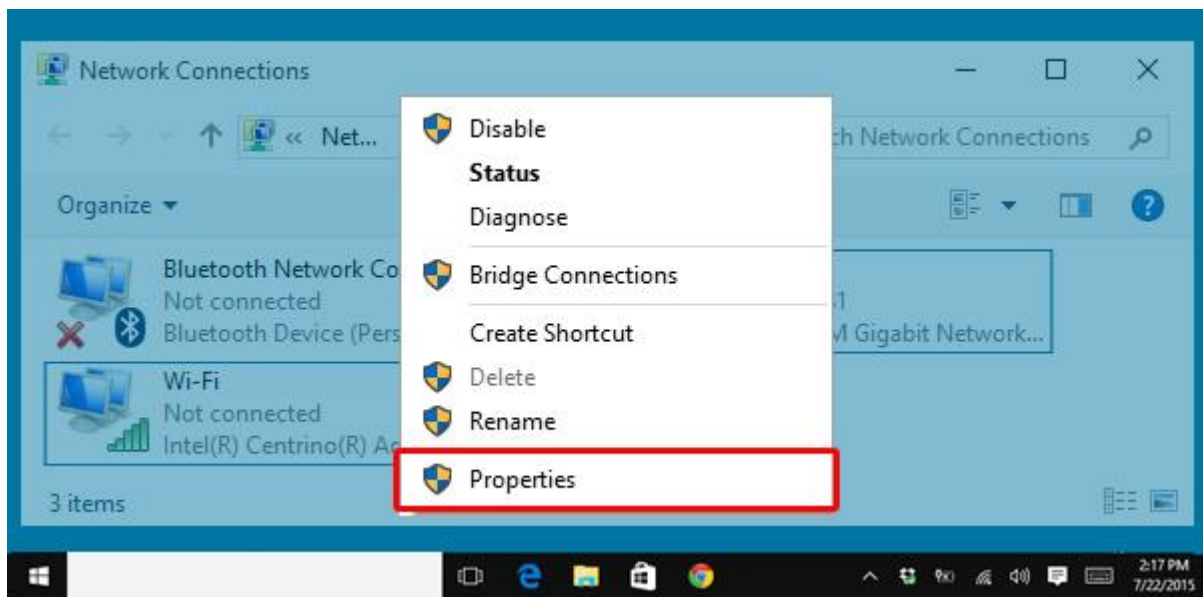
2. Select "View network connections".



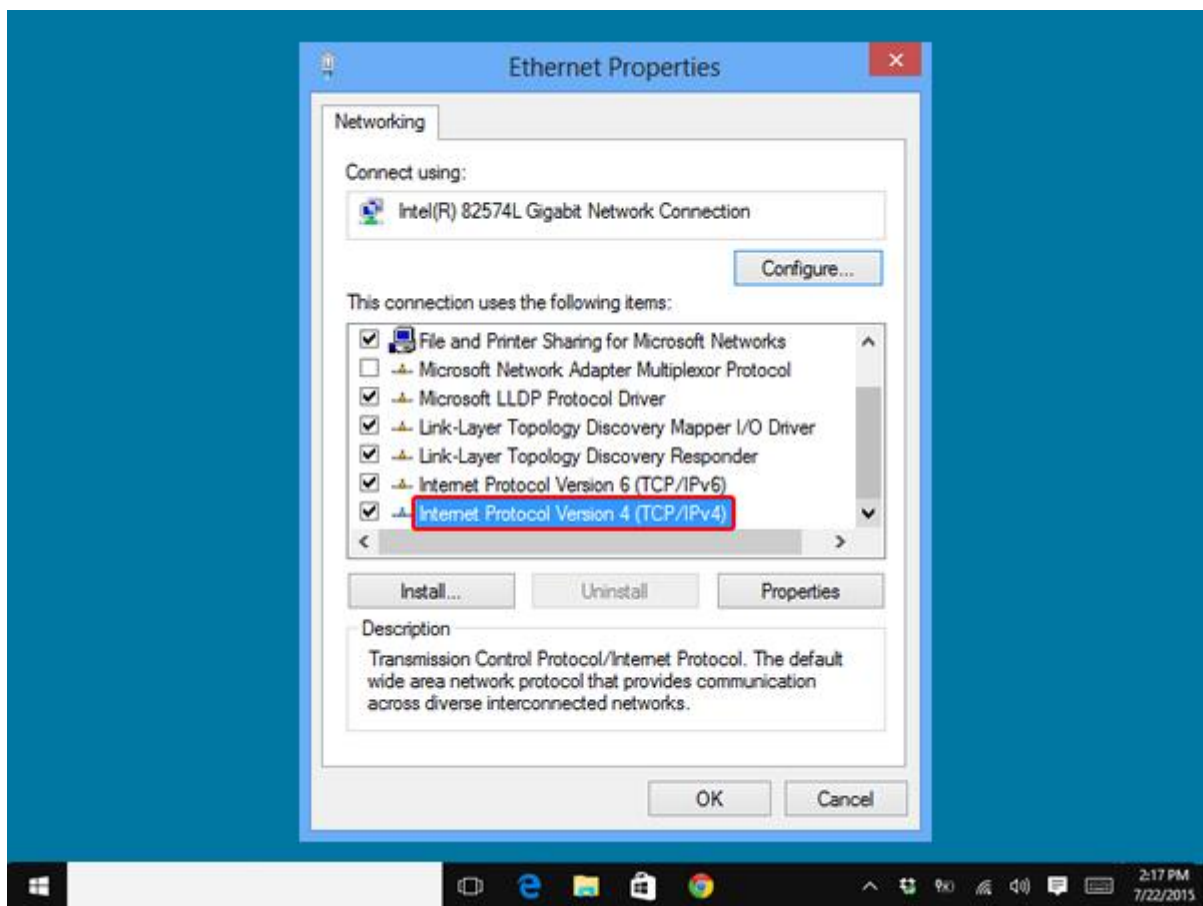
3. Locate the "network connection" you want to view.



4. After locating the connection, right-click on it and select "Properties".

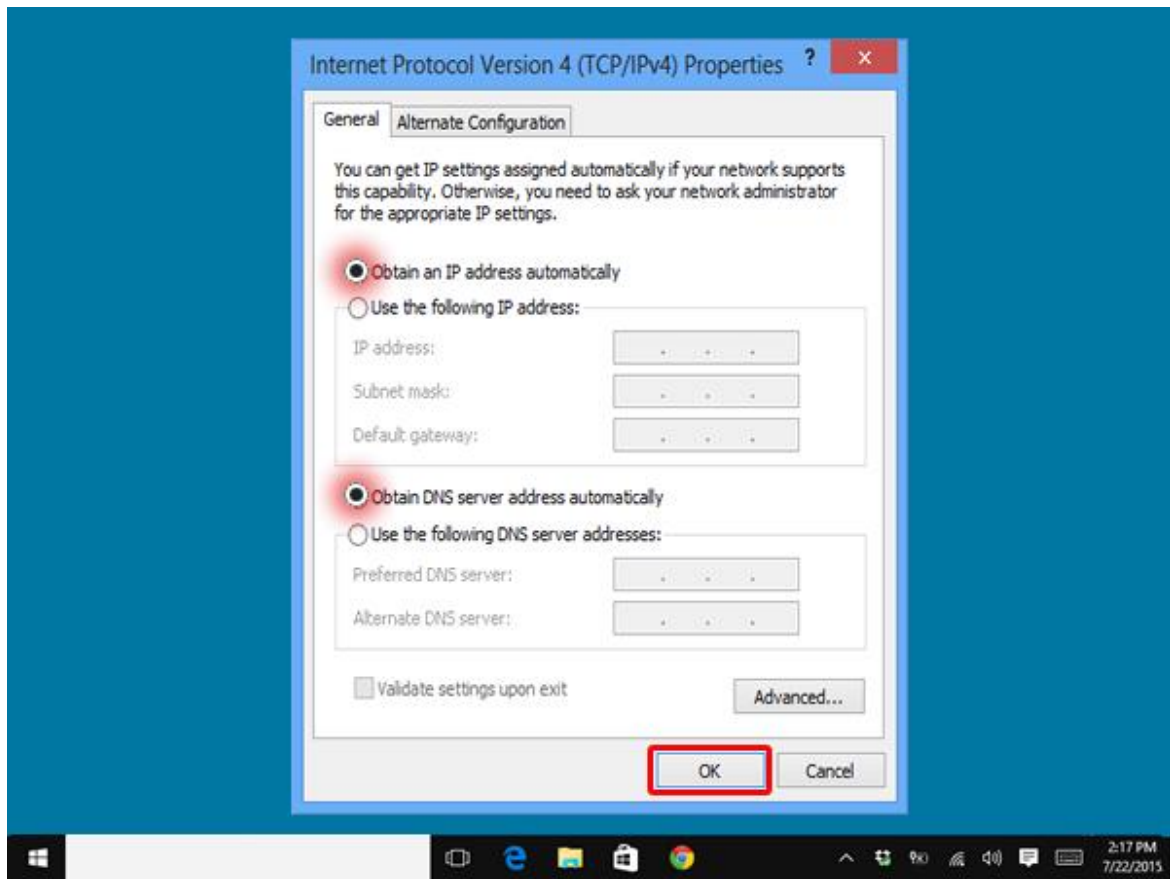


5. Double-click "Internet Protocol Version 4 (TCP/IPv4)".



6. Select the following:

- Obtain an IP address automatically
- Obtain DNS server addresses automatically
- OK



7. Select "OK" and restart your computer.

