

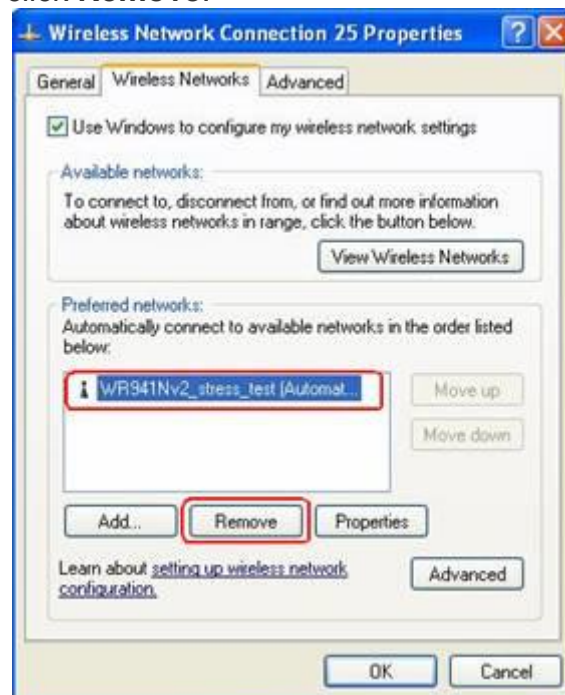
How to remove existing wireless network profile.

To delete a wireless network profile in Windows XP:

1. Open **Control panel**, select and double click **Network Connections**.
2. Select **Wireless Network Connection**, right click it and select Properties.



3. Choose “**Wireless Networks**” tab and select existing network in preferred networks, then click **Remove**.

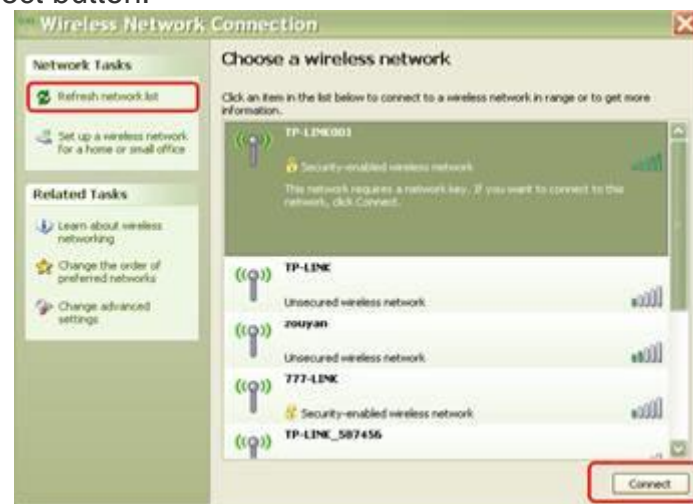


4. Click **OK**.

5. Then Select **Wireless Network Connection**, right click it, select and click **View Available Wireless Networks**.



6. Click **Refresh Network list** to view **available wireless networks**. Select the correct network which you want to connect, double click it or click Connect button.



7. If the wireless network is secured, it will pop up a window asking for the key/password.



8. Enter the correct **Key** then click Connect, wait for a while, you will connect to this wireless network.

To delete a wireless network profile in Windows 7:

1. Go to **Start** and click on **Control Panel**.
2. Proceed to click **View network status and tasks** in Control Panel window.
3. Network and Sharing Center window will appear, proceed to click **Manage wireless networks** on left panel.



4. Manage Wireless Networks window will appear, and here you can see all available wireless network connection profiles. Select the profile you don't use anymore, click on **Remove** to delete the selected profile. That's it!

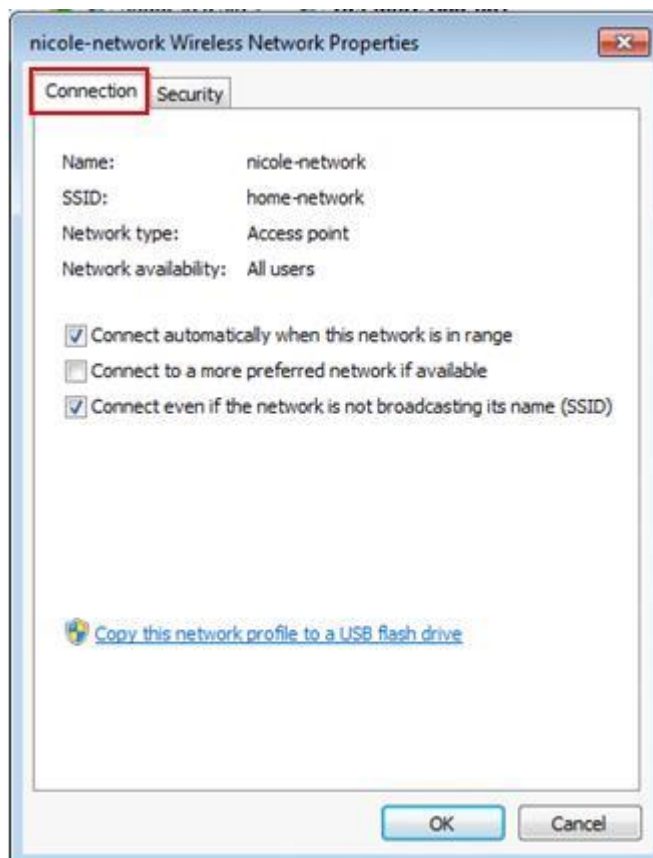
Note: Some explanation on profile icons! 2 big computers icon means infrastructure or access point network (you will connect to the wireless network via access point or wireless router). That 3 connected mini computers icon means ad hoc wireless network (the computers will connect to each others directly and wirelessly).

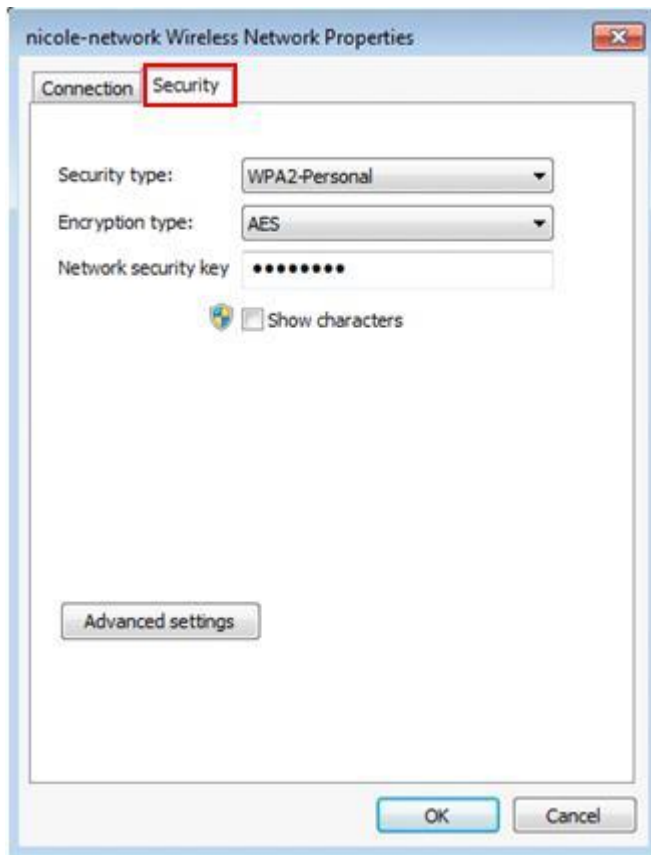
Note: You can click **Add** to add new wireless network profile.

Note: Please also note that the network profile that located at higher position will have higher priority. As an example, home-network will be connected instead of nicole-network if both networks are in connecting range due to higher priority on home-network profile. You can click on **Move up/Move down** to change the priority.



5. If you want to view and change the wireless network profile setting, just double click on the profile. The profile setting window will appear, and you can view/make change by checking on **Connection** and **Security** tabs.



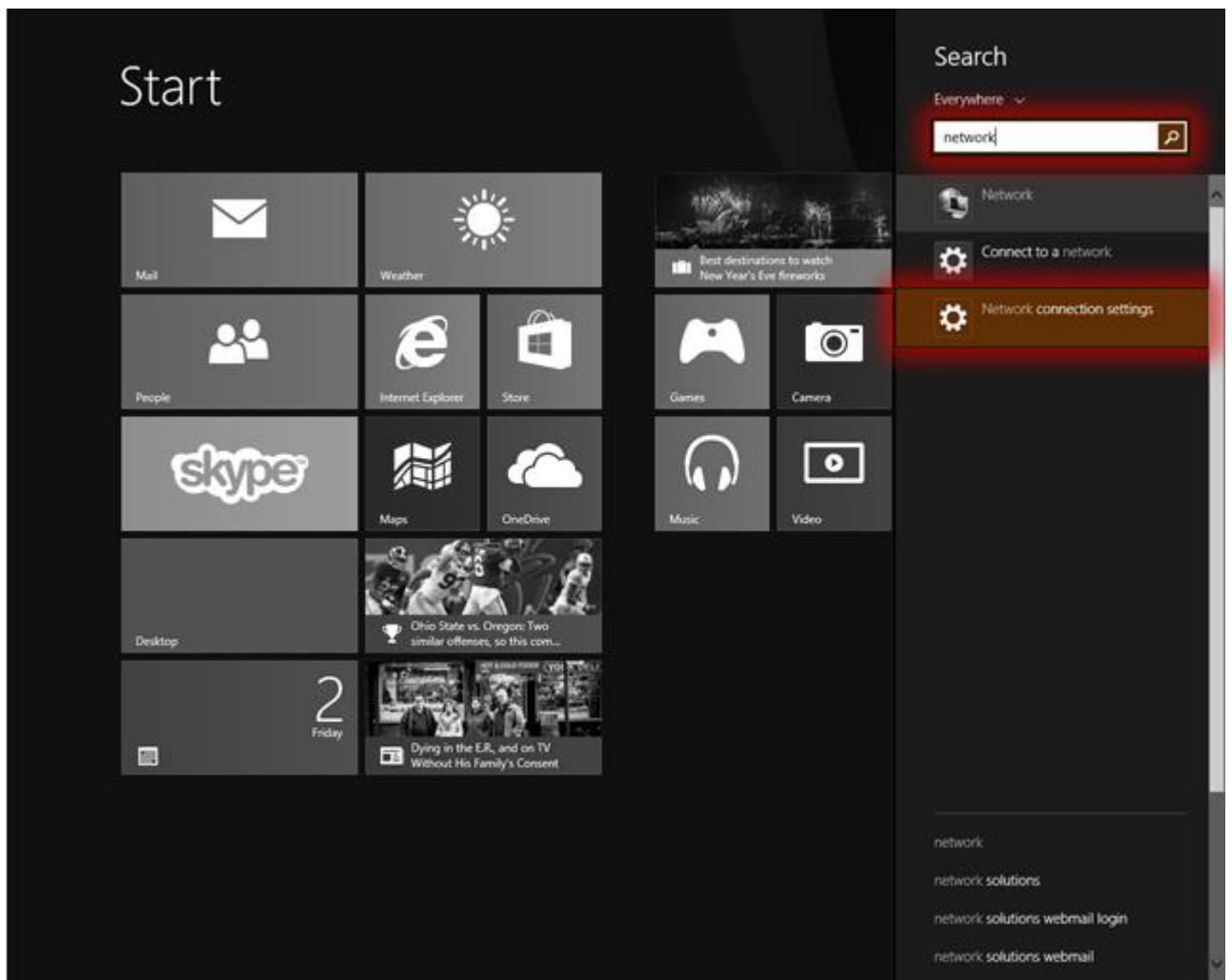


To delete a wireless network profile in Windows 8/8.1:

1. Select the 'Search'.



2. Type **network**. Select "Network connection settings".



3. Select "Manage known networks".



4. Select the network you want to forget.

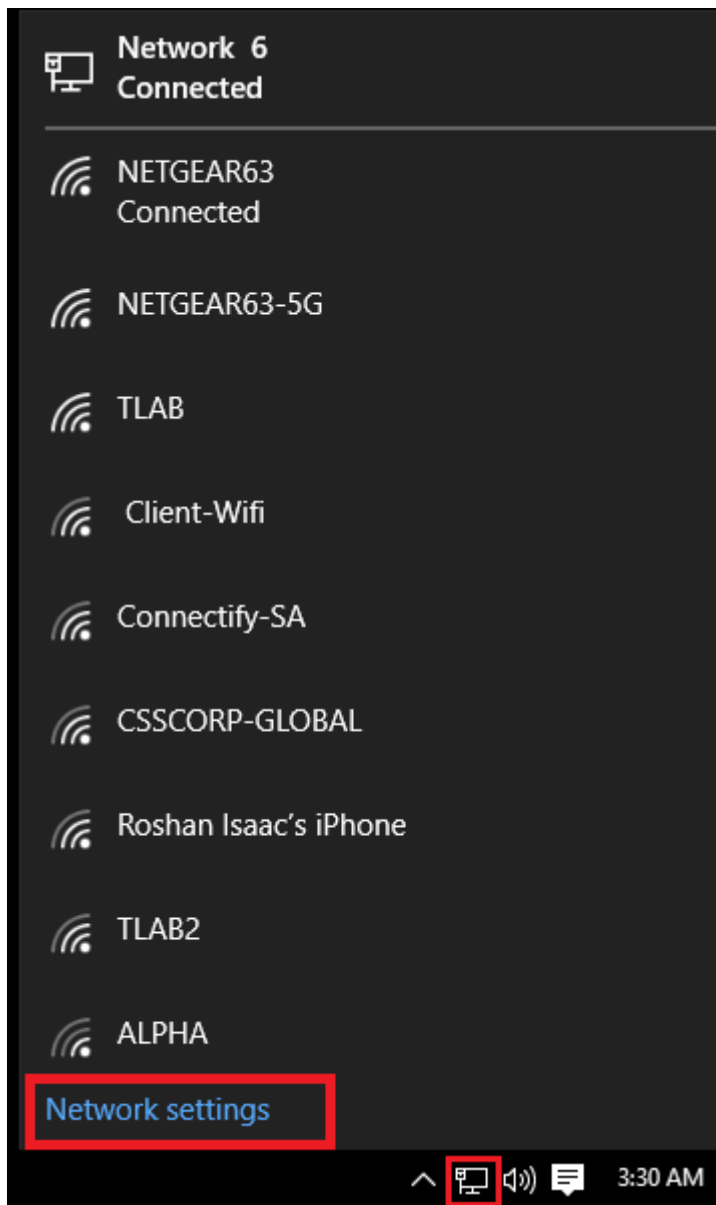


5. Select "Forget".



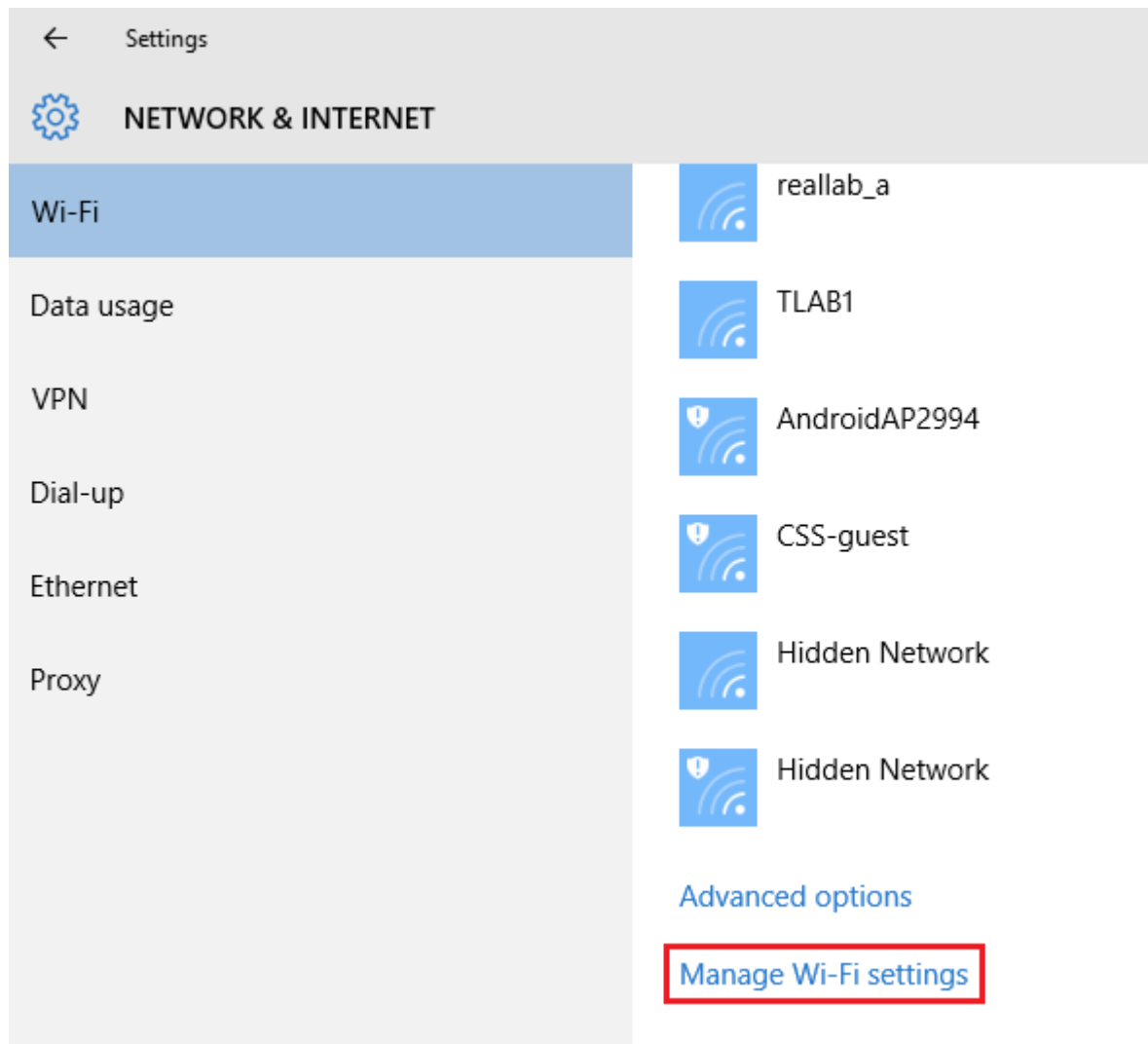
To delete a wireless network profile in Windows 10:

1. Click the Network icon on the lower right corner of your screen.

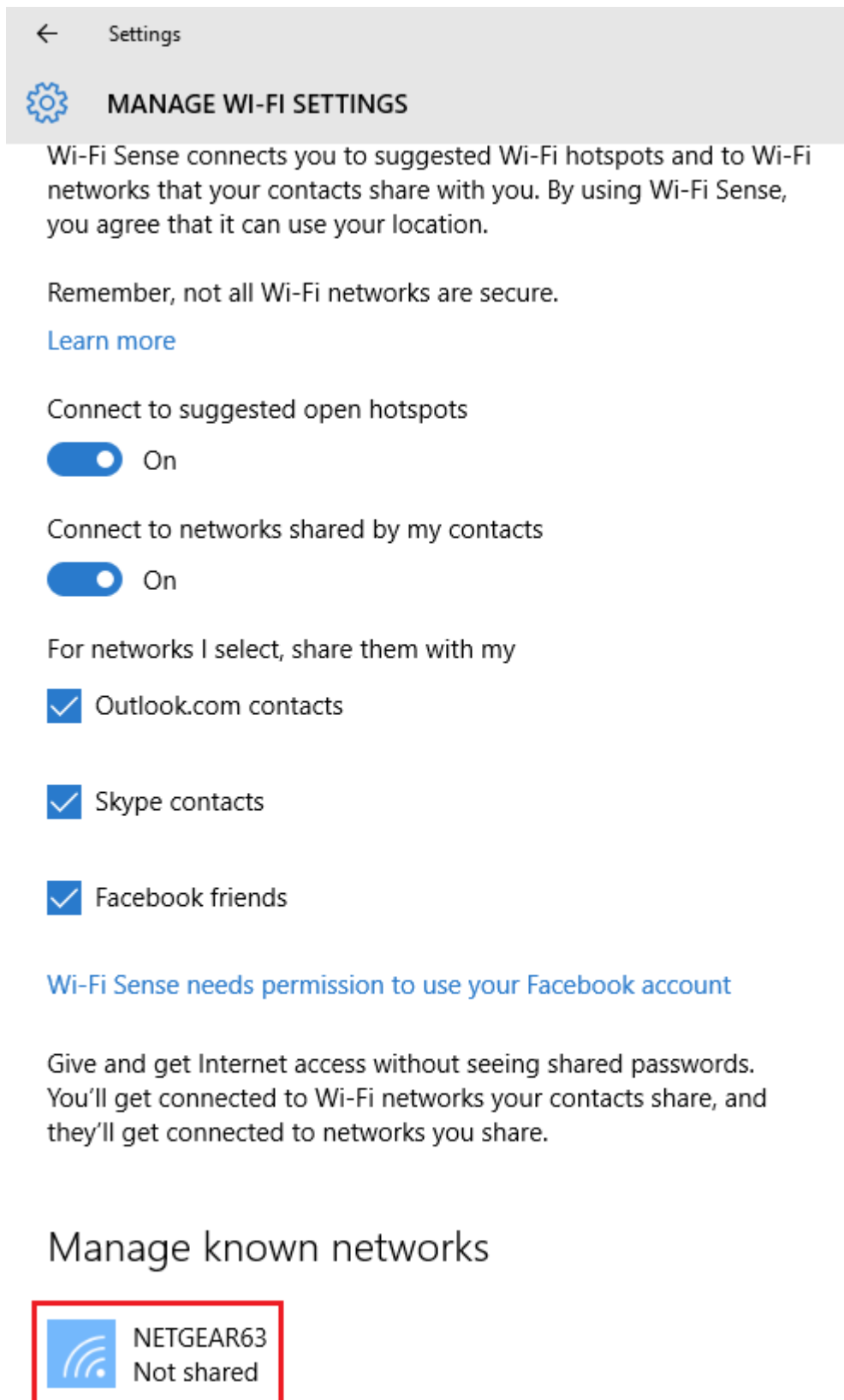


2. Click **Network settings**.

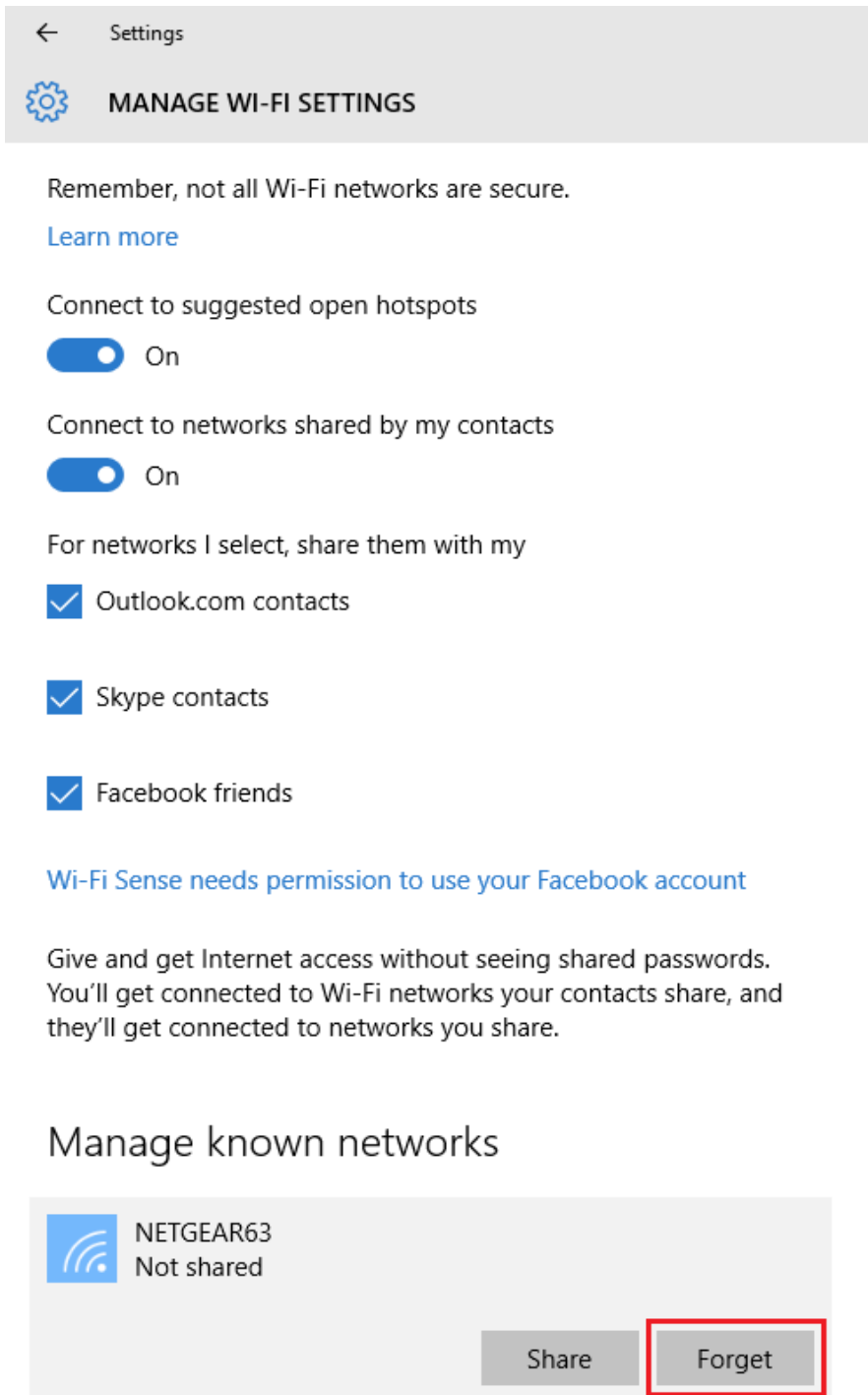
3. Click **Manage Wi-Fi settings**.



4. Under **Manage known networks**, click the network you want to delete.



5. Click **Forget**. The wireless network profile is deleted.



NOTE:

1. If it keeps connecting to the network or acquiring IP address, please check if you had entered the correct key/password.

2. If it shows that the connection is Limited or no connectivity, please ensure that you had enabled DHCP server on the wireless router/access point.